

User's Manual

EIZO ScreenSlicer™

Screen Divider Software

Important

Please read this User's Manual carefully to familiarize yourself with safe and effective usage procedures.

The latest software and User's Manual are available for download from our site:
<http://www.eizo.com>

1. Introduction	3
1-1. Features	3
2. Setting Up	4
2-1. System Requirement.....	4
2-2. Installing EIZO ScreenSlicer	4
2-3. Uninstalling EIZO ScreenSlicer	6
3. Starting and Exiting	7
3-1. Starting EIZO ScreenSlicer	7
3-2. Displaying the Software Version	7
3-3. Exiting EIZO ScreenSlicer	7
4. Division Pattern Settings.....	8
4-1. Applying Division Patterns.....	9
4-2. Window Layout	10
4-3. Creating Division Patterns.....	11
4-4. Editing Division Patterns	11
4-5. Deleting Division Patterns	14



Copyright © 2008-2009 EIZO NANA CORPORATION All rights reserved.

No part of this manual may be reproduced, stored in a retrieval system, or transmitted, in any form or by any means, electric, mechanical, or otherwise, without the prior written permission of EIZO NANA CORPORATION.

EIZO NANA CORPORATION is under no obligation to hold any submitted material or information confidential unless prior arrangements are made pursuant to EIZO NANA CORPORATION's receipt of said information. Although every effort has been made to ensure that this manual provides up-to-date information, please note that this products specifications are subject to change without notice.

Windows and Windows Vista are registered trademarks of Microsoft Corporation in the United States and other countries.

EIZO ScreenSlicer is a trademark of EIZO NANA CORPORATION.

EIZO, FlexScan, ColorEdge and RadiForce are registered trademarks of EIZO NANA CORPORATION in Japan and other countries.

1. Introduction

EIZO ScreenSlicer is the software that divides a screen and lays out multiple windows efficiently.

1-1. Features

- Screen Dividing Function

It is possible to set division patterns and lay out windows easily.

- Multi-monitor Setting Support

Using the monitor with multi-monitor setting, each monitor can be setup individually.

2. Setting Up

2-1. System Requirement

EIZO ScreenSlicer operates under the system shown below.

OS	Microsoft Windows XP Service Pack 2 (32 bit and 64 bit) Microsoft Windows XP Service Pack 3 (32 bit) Microsoft Windows Vista (32 bit and 64 bit) Microsoft Windows Vista Service Pack 1 (32 bit and 64 bit)
Monitor	FlexScan series monitors ColorEdge series monitors RadiForce series monitors FORIS series monitors (Except for SC**XA1 / SC**XD1 / SC**XD2, VT**XD1, and DT**ZD1)

2-2. Installing EIZO ScreenSlicer

Note

- The user account to be used for installing EIZO ScreenSlicer must have the "Administrators" privilege.
- For user account privilege settings, contact your system administrator.

To install the software from the EIZO LCD Utility Disk (CD-ROM)

1 Insert the "EIZO LCD Utility Disk" CD-ROM to the CD-ROM drive.

Menu opens automatically. Click "Software" tab.

Click "EIZO ScreenSlicer" on the menu.

Go to Step 2.

Tips

- If the menu does not open automatically, select [Start] - [Run]. Click [Browse...] and select "Launcher.exe" from the drive into which the "EIZO LCD Utility Disk" has been inserted. Click [OK] then the menu starts up.

To download and install the software from our website

1 After unzip the downloaded file, click "setup.exe"

The setup wizard starts.

Go to Step 2.

2 Install the software

Click "Install" on the menu, then the EIZO ScreenSlicer installer starts up.
Follow the instruction of the menu to install the software.

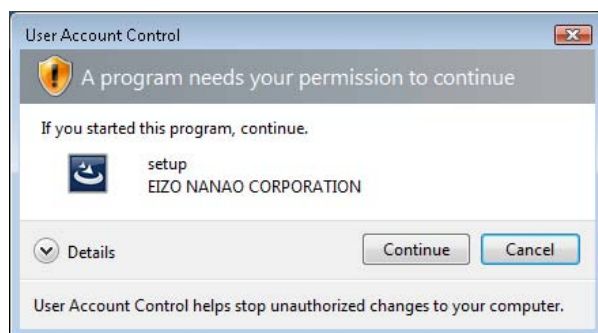
Tips

- If your OS is Windows XP, the "Security Warning" dialog may appear. ^{*1}
Click [Run] to open the menu.



*1: The "Security Warning" dialog does not appear depending on the setting.

- If your OS is Windows Vista, the "User Account Control" dialog may appear. ^{*2}
Click [Continue] to open the menu.



*2: The "User Account Control" dialog does not appear depending on the setting.

Note

- If your OS does not meet the system requirements, the error message will appear and the installation will not be executed.

When the installation is completed, the EIZO ScreenSlicer icon appears on the notification area.



2-3. Uninstalling EIZO ScreenSlicer

Windows XP

- 1** Select [Control Panel] - [Add or Remove Programs]
- 2** Select "EIZO ScreenSlicer" from the list and click [Remove] to remove the software

Windows Vista

- 1** Select [Control Panel] - [Programs] and [Uninstall a Program]
- 2** Select "EIZO ScreenSlicer" from the list and click [Uninstall]

3. Starting and Exiting

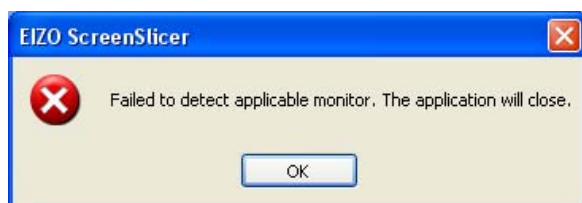
3-1. Starting EIZO ScreenSlicer

EIZO ScreenSlicer starts automatically when you log on the PC. When it has started up, the EIZO ScreenSlicer icon is displayed on the notification area to indicate that the program is resident.



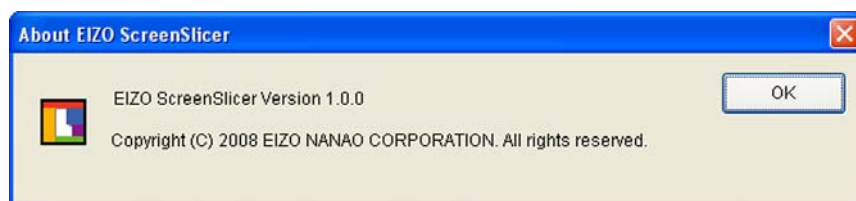
Tips

- Once EIZO ScreenSlicer has been exited, restart as follows.
 - Click [Start] – [All Programs] – [EIZO] – [EIZO ScreenSlicer].
- If any of the following messages appear at startup, check if the system requirements described in "[2-1. System Requirement](#)" are met.



3-2. Displaying the Software Version

- 1 Right-click the EIZO ScreenSlicer icon on the notification area to open the menu
- 2 Click [About...]



3-3. Exiting EIZO ScreenSlicer

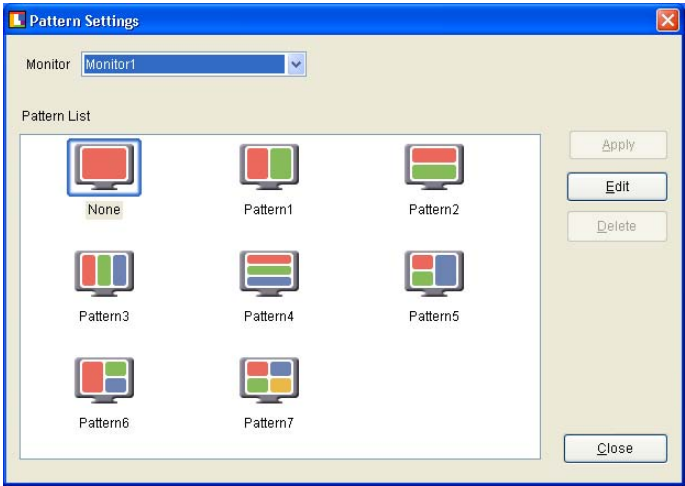
- 1 Right-click the EIZO ScreenSlicer icon on the notification area to open the menu
- 2 Click [Exit]

4. Division Pattern Settings

EIZO ScreenSlicer defines the size and position of each window with the Pattern Settings. Eight patterns have already been preset, and another five patterns can be added.

- 1
- Right-click the EIZO ScreenSlicer icon on the notification area to open the menu
- 2
- Click [Pattern Settings]

The dialog to set the division pattern appears.

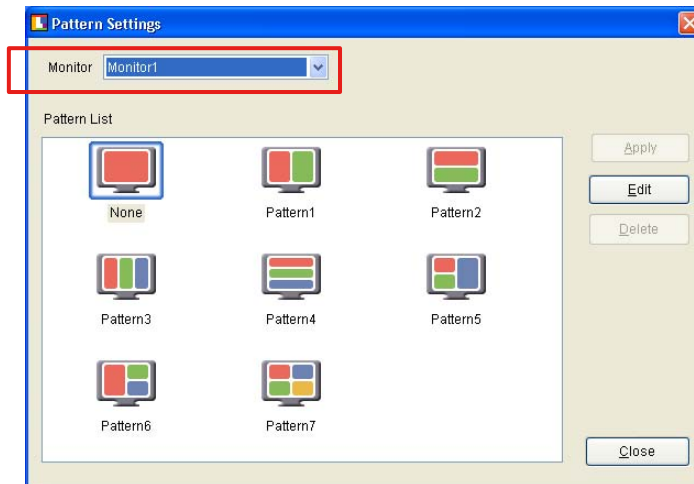


Monitor	Select the monitor to set the division pattern.
Pattern List	Display the division pattern list.
Apply	Apply the selected division pattern.
Edit	Edit the division pattern.
Delete	Delete the added patterns. * Preset patterns cannot be deleted.
Close	Close the dialog.

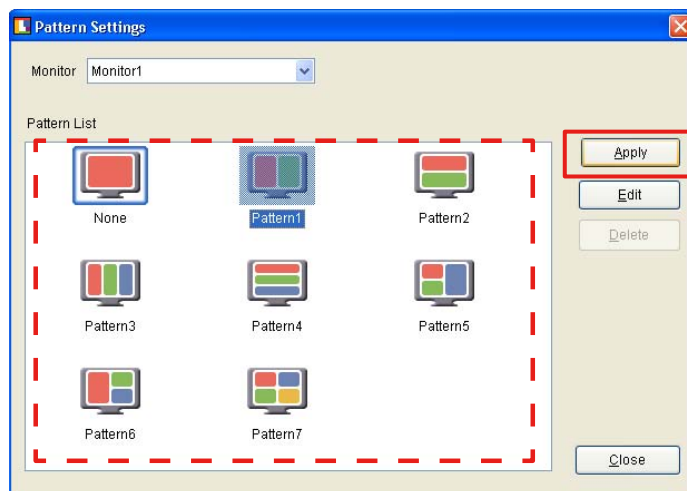
4-1. Applying Division Patterns

Specify the pattern setting to define the size and position of each window.

- 1 From "Monitor" pull-down menu select the monitor to set the division pattern when using the monitor with multi-monitor setting



- 2 Select the division pattern from the Pattern List and click [Apply]



Tips

- When selecting the division pattern that is already applied, [Apply] is not available.

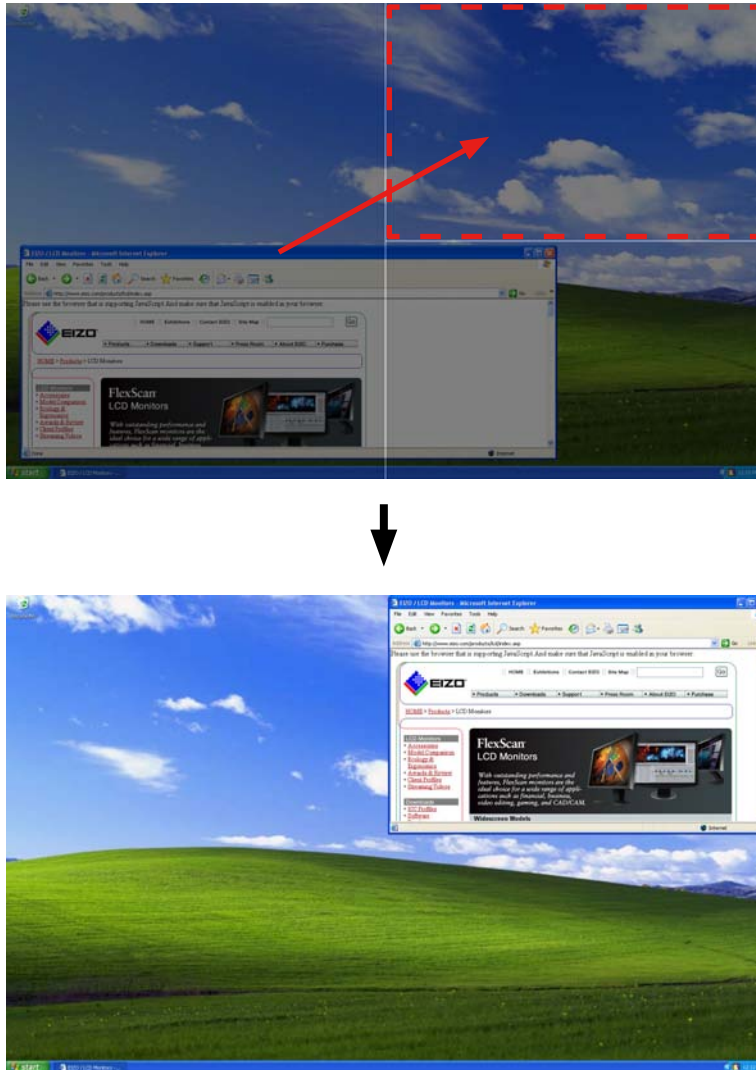
4-2. Window Layout

Lay out the window in the frame.

By holding down [Shift] key and dragging the title bar of the window, the screen switches to the window layout screen.

Move the window until the cursor is positioned in the layout frame.

The window size automatically changes according to the frame.



Tips

- The maximized window cannot be laid out. Reduce the display size of the window.
- Windows that have fixed sizes such as dialogs cannot be laid out.
- When the reducible or enlargeable range of the window size is limited, the window size does not change according to the frame.
- Windows that have no title bar cannot be laid out.
- When using the monitor with multi-monitor setting, the screen of the monitor in which the cursor is positioned switches to the window layout screen.

4-3. Creating Division Patterns

Up to five division patterns can be added.

Click [Edit] to open the edit window.

Regarding editing division patterns, refer to the "[Configuration of Division Patterns](#)" of "4-4. Editing Division Patterns" section and onwards.

Tips

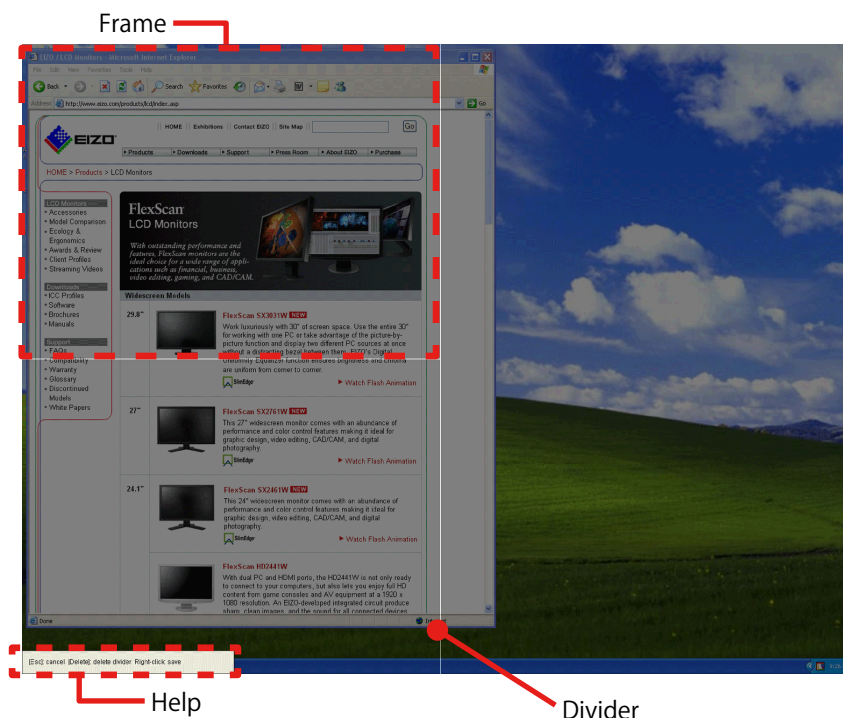
- By clicking [Edit] with the division pattern selected, you can edit the pattern based on the selected pattern.
- The icon of the added pattern is displayed as "User".

4-4. Editing Division Patterns

Edit the added patterns.

Click [Edit] to open the edit window.

Configuration of Division Patterns



Divider	A line that divides the layout area of windows.
Frame	An area surrounded with dividers. This defines the window size.
Help	This shows how to delete dividers, cancel or save settings.

Adding dividers

Specify the starting point and ending point of the divider by dragging them with the pen cursor. When you specify the approximate position of the divider, the angle is automatically corrected horizontally or vertically, and then the divider is extended to the crossed divider or the end of the screen.

Tips

- The screen can be divided into up to 16 parts by adding up to 6 dividers.
-

Deleting dividers

By clicking the divider with the double-headed arrow cursor, the selected divider turns green. Click [Delete] key.

Changing divider's position

By pointing the cursor to the divider, the cursor changes to a double-headed arrow. Then drag the divider to any position.

Canceling divider's editing

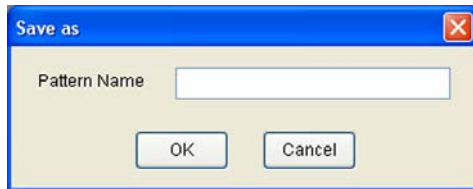
Press [Esc] key or right-click to open the menu, and then click [Cancel].

Saving as a new file

After edit the divider, save the setting.

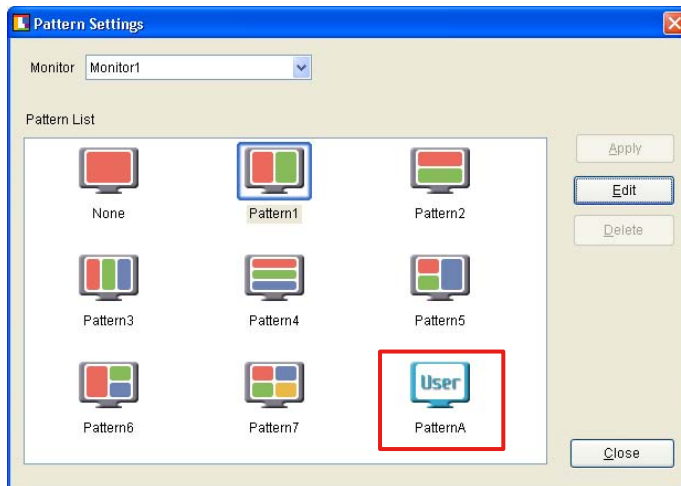
1 Right-click to open the menu, and click "Save as"

The dialog to specify the pattern name appears.



2 Enter a name and click [OK]

The created division pattern is added.



Tips

- Enter the pattern name no more than 10 characters.

When applying the saved division pattern, refer to ["4-1. Applying Division Patterns"](#).

Overwrite saving

After edit the divider, save the setting.

Right-click to open the menu, and click "Save".

Tips

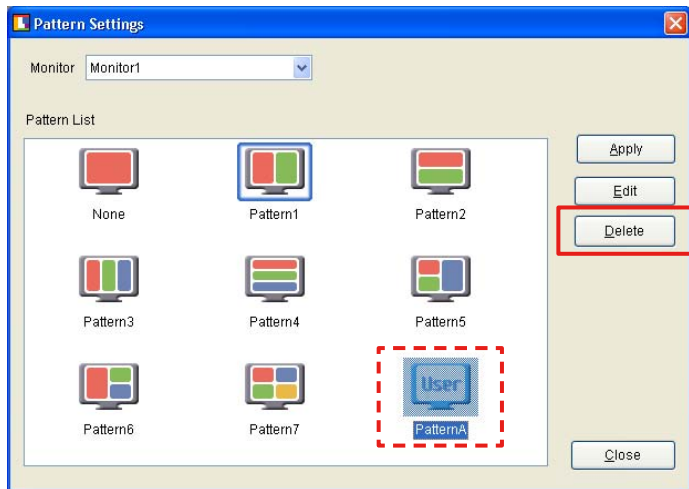
- Preset patterns cannot be overwritten.

When applying the saved division pattern, refer to ["4-1. Applying Division Patterns"](#).

4-5. Deleting Division Patterns

Delete the added patterns.

Select the division pattern to be deleted, and then click [Delete].



Note

- All the screens with this pattern applied will be undivided.

Tips

- Preset patterns cannot be deleted.



EIZO NANAO CORPORATION

<http://www.eizo.com>

6th Edition-June, 2009

03V22373F1
(U.M-SCREENLICER)